

DATA SHEET

Deep Surface 5mm LED Profile

Product Code: P-DS5

P-DS5



Fixing Clips



End Caps



Semi Diffused Cover

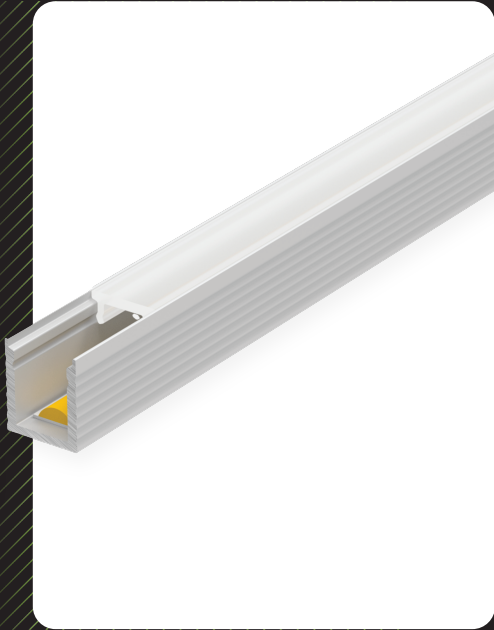


RoHS Compliant



CE

5 YEAR WARRANTY



PRODUCT SPECIFICATION

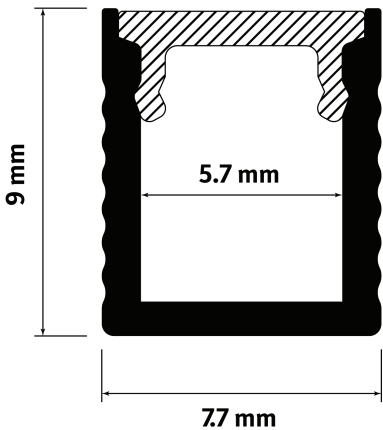
Profile Width	7.7mm
Profile Depth	9mm
Max LED Width	5.7mm
Available Lengths	1m / 2m (Bespoke Lengths Available)
IP Rating	20
Lens Cover	Opal / Semi Diffused (20%)
Certified	CE + RoHS
Colour	Silver
Material	Base - Aluminium / Cover - Polycarbonate
Included	1x Base / 1x Cover / 2-4 End Caps / 2-4 Fixing Clips

DESCRIPTION

The deep surface 5mm aluminium profile is designed to deliver a sleek and professional finish for your LED installations.

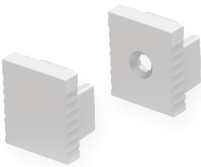
It features a semi-diffused opal lens, which effectively disperses the light from individual LED diodes, creating a smooth and continuous light-bar effect.

DIMENSIONS



ACCESSORIES

End Caps:



Fixing Clips:



## INSTALLATION OPTIONS

### Fixing Brackets:

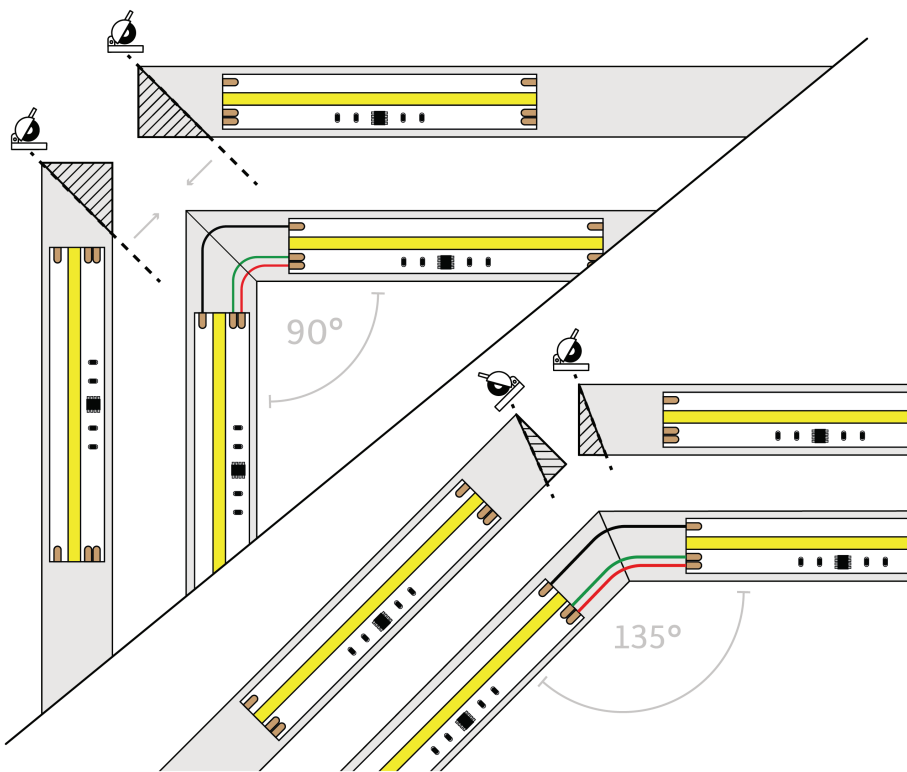
For added convenience, use our specially designed fixing brackets. These can be screwed or nailed into place, allowing the aluminium profile to clip securely onto them.

### Adhesive:

Adhesive: Due to its light weight, you can Dot & Dab the profile directly to the surface with a grab adhesive (CT1 for example)

### Countersink Screws:

Secure the profile directly to the surface with countersink screws.



## CUSTOMISABLE LENGTHS

Our deep surface 5mm profile is available in standard lengths of 1m and 2m but they can be easily customised to your specific requirements. Simply cut the profile with straight or mitred cuts by using a hacksaw for a perfect fit.

For further details and support on LED profiles and extrusions, visit our dedicated aluminium profiles and extrusions support page.