

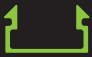
DATA SHEET

Recessed LED Profile


Product Code: P-DR-1 / P-DR-2

P-G


Free Foam Inserts




Fixing Clips




End Caps



Semi Diffused Cover

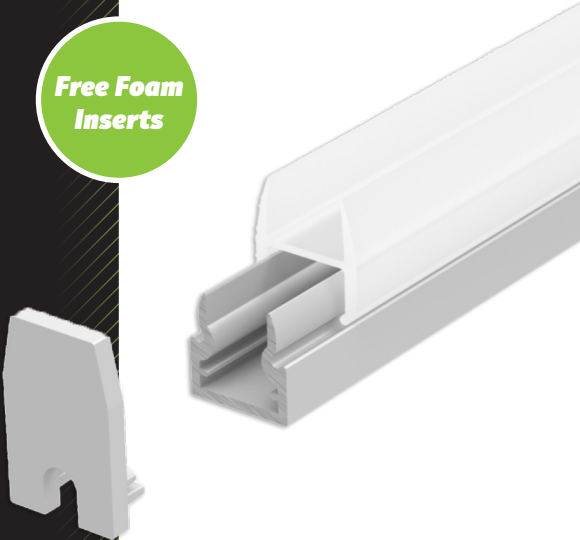


RoHS Compliant



CE

5 YEAR WARRANTY



PRODUCT SPECIFICATION

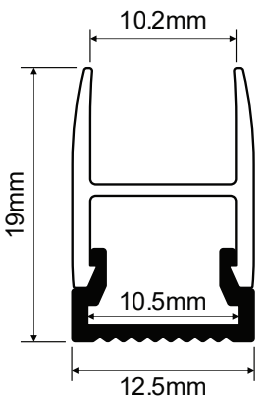
Profile Width	10.8mm
Profile Depth	18mm
Max LED Width	8.8mm
Available Lengths	1m / 2m (Bespoke Lengths Available)
IP Rating	20
Lens Cover	Opal / Semi Diffused (20%)
Certified	CE + RoHS
Colour	Silver / White / Black
Material	Base - Aluminium
Included	1x Base / 1x Cover / 2-4 End Caps / 2-4 Fixing Clips

DESCRIPTION

The recessed aluminium profile is the perfect solution for projects where you need to seamlessly integrate your lighting into a wall or ceiling.

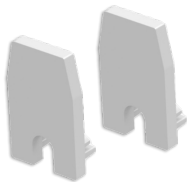
Designed with perforated flanges, this profile can be easily plastered over, allowing the aluminium housing to blend discreetly into the surrounding surface for a modern, professional finish.

DIMENSIONS



ACCESSORIES

End Caps:



Fixing Clips:



INSTALLATION OPTIONS

Fixing Brackets:

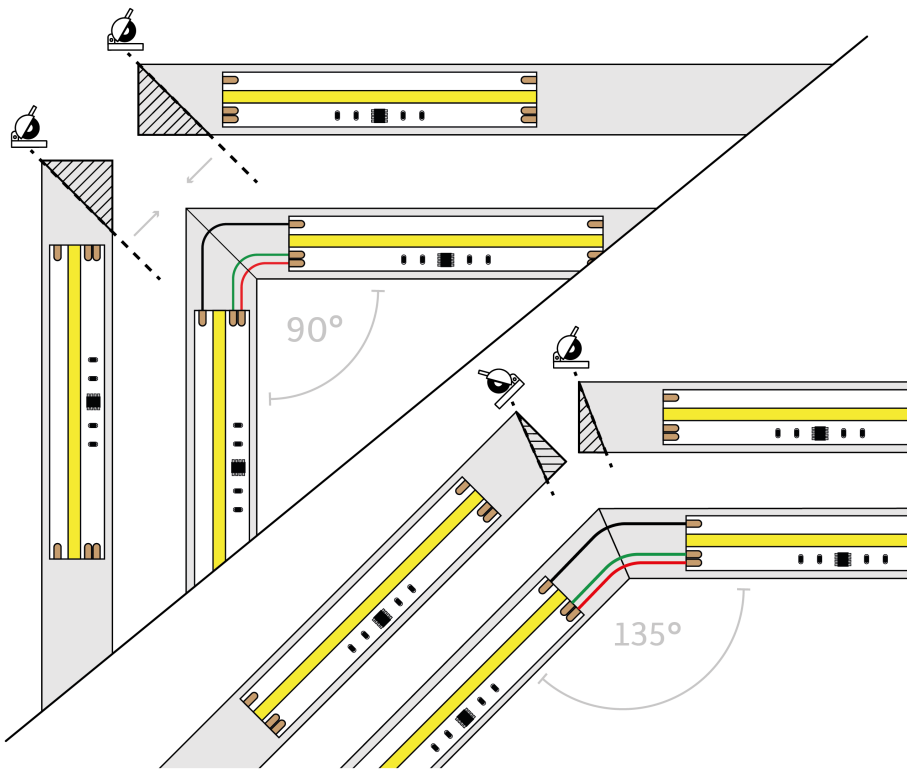
For added convenience, use our specially designed fixing brackets. These can be screwed or nailed into place, allowing the aluminium profile to clip securely onto them.

Adhesive:

Due to its lightweight, you can Dot & Dab the profile directly to the surface with a grab adhesive (CT1 for example)

Countersink Screws:

Secure the profile directly to the surface with countersink screws.



CUSTOMISABLE LENGTHS

Our deep recessed profile is available in standard lengths of 1m and 2m but they can be easily customised to your specific requirements. Simply cut the profile with straight or mitred cuts by using a hacksaw for a perfect fit.

For further details and support on LED profiles and extrusions, visit our dedicated aluminium profiles and extrusions support page.