


DATA SHEET


Large Surface LED Profile

Product Code: P-LS


P-LS




Fixing Clips




End Caps



Semi Diffused Cover

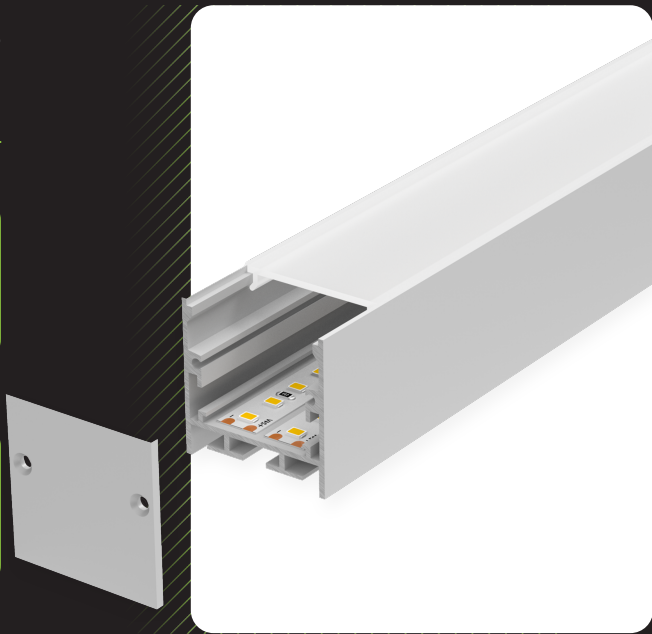


RoHS Compliant



CE

5 YEAR WARRANTY



PRODUCT SPECIFICATION

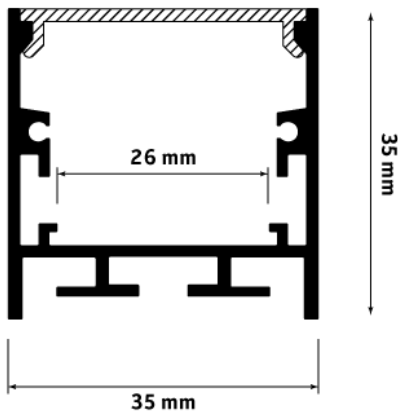
Profile Width	35mm
Profile Depth	35mm
Max LED Width	26mm
Available Lengths	1m / 2m / 3m (Bespoke Lengths Available)
IP Rating	20
Lens Cover	N/A
Certified	CE + RoHS
Colour	Silver
Material	Base - Aluminium / Cover - Polycarbonate
Included	1x Base / 1x Cover / 2-4 End Caps / 2-4 Fixing Clips

DESCRIPTION

The large surface aluminium profile is designed to deliver a sleek and professional finish for your LED installations.

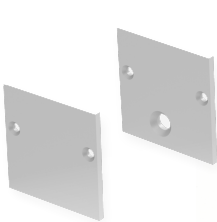
It features a semi-diffused opal lens, which effectively disperses the light from individual LED diodes, creating a smooth and continuous light-bar effect.

DIMENSIONS



ACCESSORIES

End Caps:



Fixing Clips:



INSTALLATION OPTIONS

Fixing Brackets:

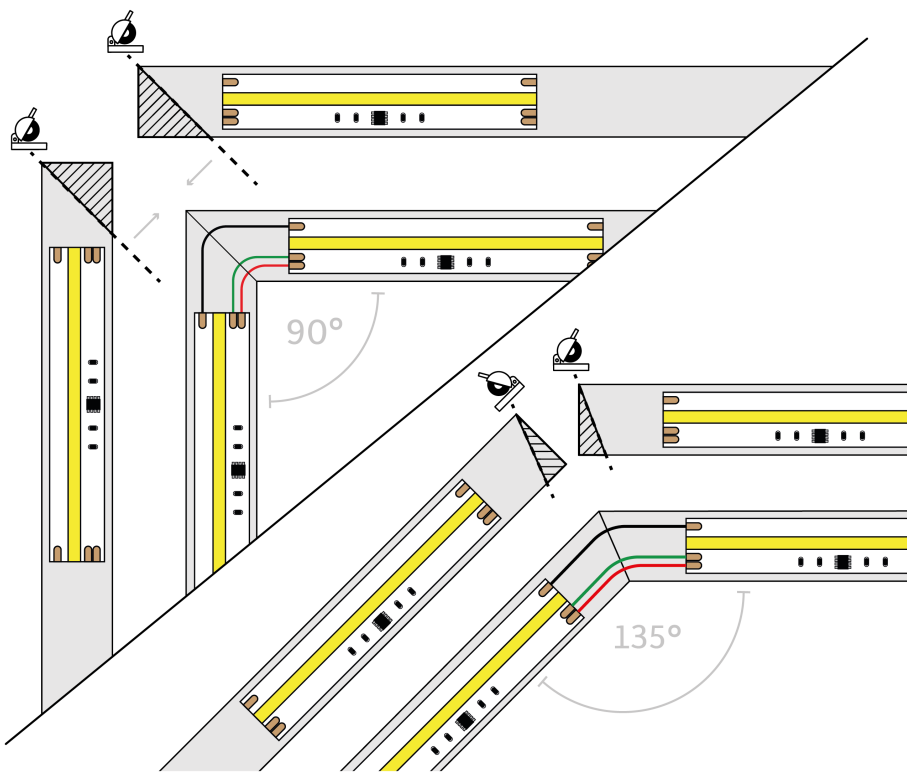
For added convenience, use our specially designed fixing brackets. These can be screwed or nailed into place, allowing the aluminium profile to clip securely onto them.

Adhesive:

Adhesive: Due to its light weight, you can Dot & Dab the profile directly to the surface with a grab adhesive (CT1 for example)

Countersink Screws:

Secure the profile directly to the surface with countersink screws.



CUSTOMISABLE LENGTHS

Our large surface profile is available in standard lengths of 1m, 2m and 3m but they can be easily customised to your specific requirements. Simply cut the profile with straight or mitred cuts by using a hacksaw for a perfect fit.

For further details and support on LED profiles and extrusions, visit our dedicated aluminium profiles and extrusions support page.