


DATA SHEET

Acoustic Panel / Slat Wall LED Profile


Product Code: P-MW-3

P-MW


Free Foam
Inserts




Fixing Clips




End Caps



Semi Diffused
Cover



RoHS
Compliant



CE

5 YEAR
WARRANTY



PRODUCT SPECIFICATION

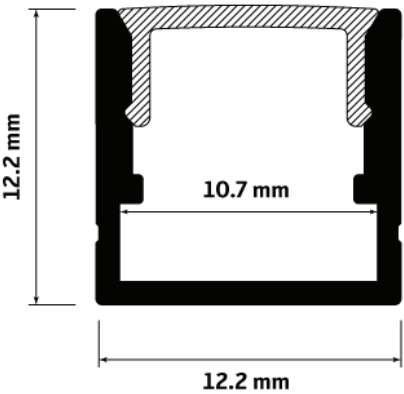
Profile Width	12.2mm
Profile Depth	10.7mm
Max LED Width	10.7mm
Available Lengths	3m (Bespoke Lengths Available)
IP Rating	20
Lens Cover	Opal / Semi Diffused (20%)
Certified	CE + RoHS
Colour	Black
Material	Base - Aluminium / Cover - Polycarbonate
Included	1x Base / 1x Cover / 2-4 End Caps / 2-4 Fixing Clips

DESCRIPTION

The media wall aluminium profile is designed to deliver a sleek and professional finish for your LED installations.

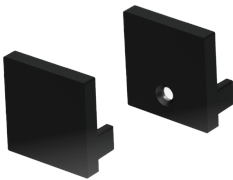
It features a black semi-diffused opal lens, which effectively disperses the light from individual LED diodes, creating a smooth and continuous light-bar effect.

DIMENSIONS



ACCESSORIES

End Caps:



Fixing Clips:



INSTALLATION OPTIONS

Fixing Brackets:

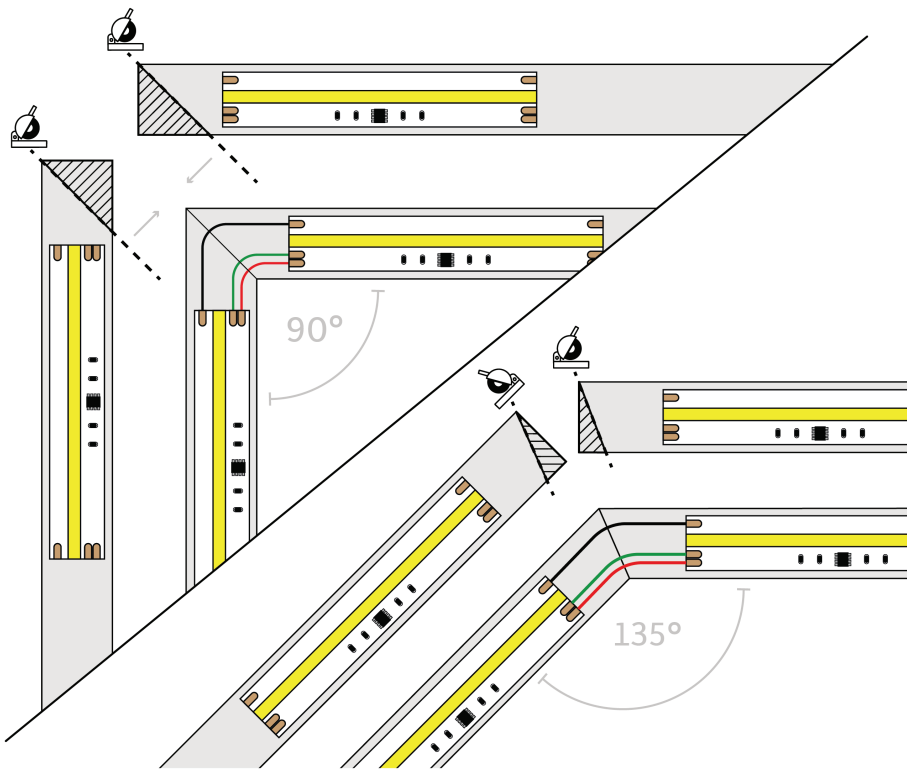
For added convenience, use our specially designed fixing brackets. These can be screwed or nailed into place, allowing the aluminium profile to clip securely onto them.

Adhesive:

Due to its lightweight, you can Dot & Dab the profile directly to the surface with a grab adhesive (CT1 for example)

Countersink Screws:

Secure the profile directly to the surface with countersink screws.



CUSTOMISABLE LENGTHS

Our media wall profile is available in a standard length of 3m but they can be easily customised to your specific requirements. Simply cut the profile with straight or mitred cuts by using a hacksaw for a perfect fit.

For further details and support on LED profiles and extrusions, visit our dedicated aluminium profiles and extrusions support page.