

SPECIFICATION SHEET

Plaster-In Flush Wall Wash LED Profile Product Code: P-PI-FWW-1 / P-PI-FWW-2

P-PI-FWW



Foam Inserts



End Caps



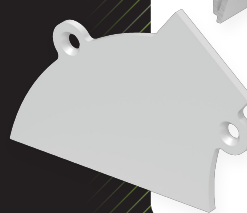
Semi Diffused
Cover

RoHS
Compliant

CE

**5 YEAR
WARRANTY**

**Free Foam
Inserts**



PRODUCT SPECIFICATION

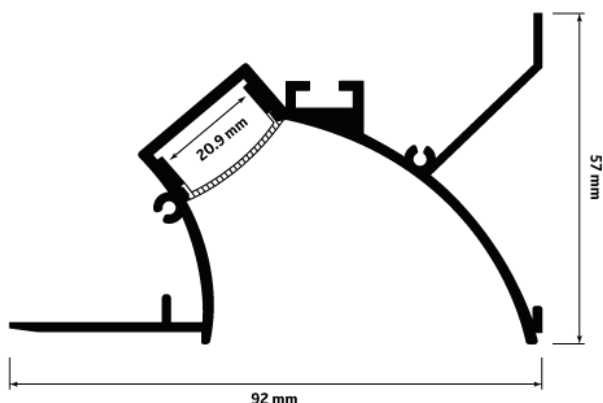
Profile Width	92mm Including Flange
Profile Depth	57mm
Max LED Width	20.9mm
Available Lengths	1m / 2m (Bespoke Lengths Available)
IP Rating	20
Lens Cover	Opal / Semi Diffused (20%)
Certified	CE + RoHS
Colour	Silver
Material	Base - Aluminium / Cover - Polycarbonate
Included	1x Base / 1x Cover / 2-4 End Caps / Foam Insert

DESCRIPTION

The plaster-in flush wall wash aluminium profile is the perfect solution for projects where you need to seamlessly integrate your lighting into a wall or ceiling.

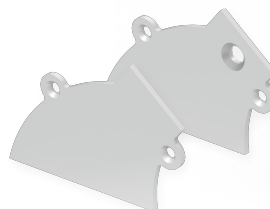
Designed with perforated flanges, this profile can be easily plastered over, allowing the aluminium housing to blend discreetly into the surrounding surface for a modern, professional

DIMENSIONS



ACCESSORIES

End Caps:



Foam Insert:



INSTALLATION OPTIONS

Foam Inserts Included:

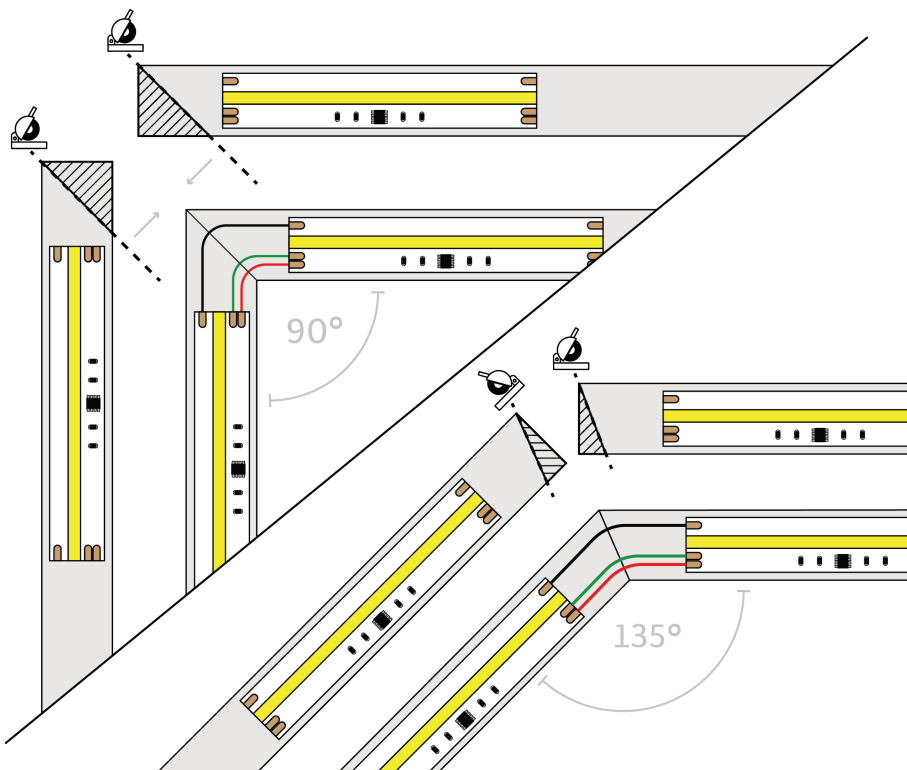
Foam insert protects the inside of your aluminium profile when plastering to ensure this stays clean, ready to apply your LED strip lights without damages. Included at no additional cost.

First Fix:

Mount the aluminium profile to your dry wall / plasterboard with plasterboard screws.

Second Fix:

Once fixed in place, please ensure the foam insert is in situ before your plasterer starts. This will protect the inside of the profile so the area will be clean and not cause any damage to your LED strips upon installation.



CUSTOMISABLE LENGTHS

Our plaster-in flush wall wash profile is available in standard lengths of 1m and 2m but they can be easily customised to your specific requirements. Simply cut the profile with straight or mitred cuts by using a hacksaw for a perfect fit.

For further details and support on LED profiles and extrusions, visit our dedicated aluminium profiles and extrusions support page.