


DATA SHEET


Recessed Angle Wall Wash LED Profile Product Code: P-RAW-1 / P-RAW-2

P-RAW


Free Foam
Inserts




Fixing Clips




End Caps



Semi Diffused
Cover

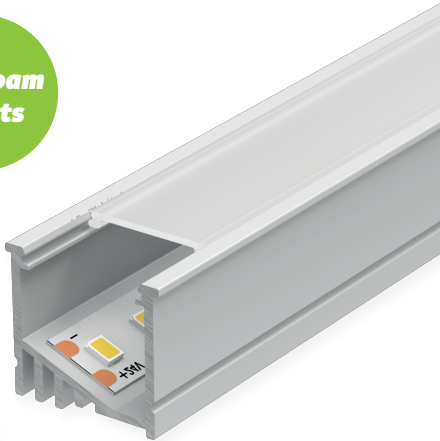
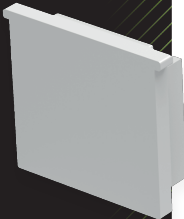


RoHS
Compliant



CE

5 YEAR
WARRANTY



PRODUCT SPECIFICATION

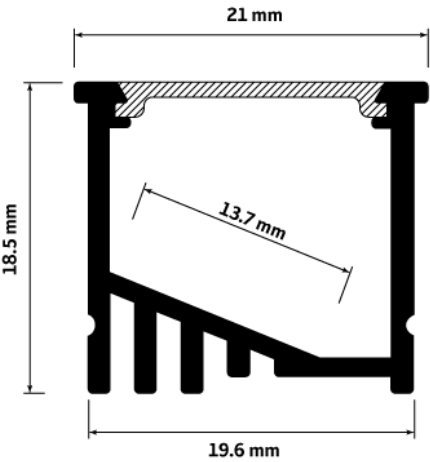
Profile Width	21mm
Profile Depth	18.5mm
Max LED Width	13.7mm
Available Lengths	1m / 2m (Bespoke Lengths Available)
IP Rating	20
Lens Cover	Opal / Semi Diffused (20%)
Certified	CE + RoHS
Colour	Silver
Material	Base - Aluminium / Cover - Polycarbonate
Included	1x Base / 1x Cover / 2-4 End Caps / 2-4 Fixing Clips

DESCRIPTION

The recessed angle wall wash aluminium profile is the perfect solution for projects where you need to seamlessly integrate your lighting into a wall or ceiling.

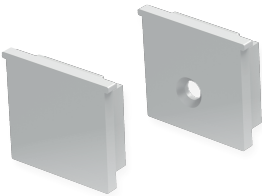
Designed with perforated flanges, this profile can be easily plastered over, allowing the aluminium housing to blend discreetly into the surrounding surface for a modern, professional

DIMENSIONS



ACCESSORIES

End Caps:



Fixing Clips:



INSTALLATION OPTIONS

Fixing Brackets:

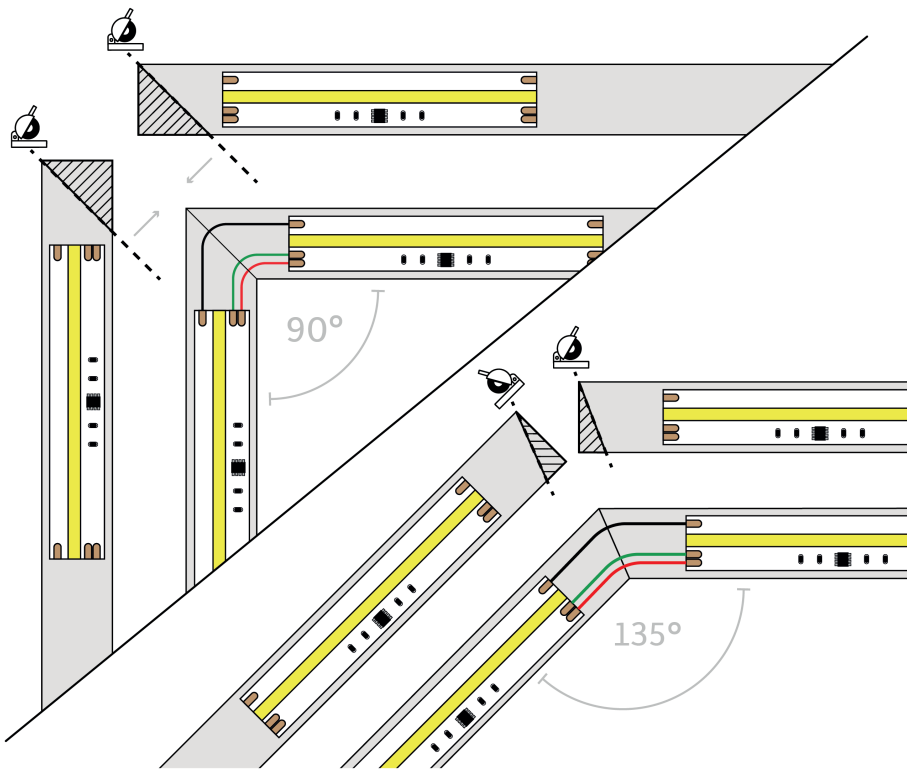
For added convenience, use our specially designed fixing brackets. These can be screwed or nailed into place, allowing the aluminium profile to clip securely onto them.

Adhesive:

Due to its lightweight, you can Dot & Dab the profile directly to the surface with a grab adhesive (CT1 for example)

Countersink Screws:

Secure the profile directly to the surface with countersink screws.



CUSTOMISABLE LENGTHS

Our recessed angle wall wash profile is available in standard lengths of 1m and 2m but they can be easily customised to your specific requirements. Simply cut the profile with straight or mitred cuts by using a hacksaw for a perfect fit.

For further details and support on LED profiles and extrusions, visit our dedicated aluminium profiles and extrusions support page.