


DATA SHEET

Tile In Recessed LED Profile


Product Code: P-TI-1 / P-TI-2

P-TI


Free Foam
Inserts




Foam Inserts




End Caps



Semi Diffused
Cover

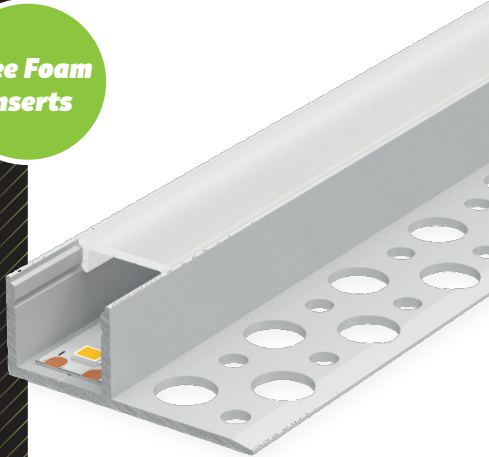


RoHS
Compliant



CE

5 YEAR
WARRANTY



PRODUCT SPECIFICATION

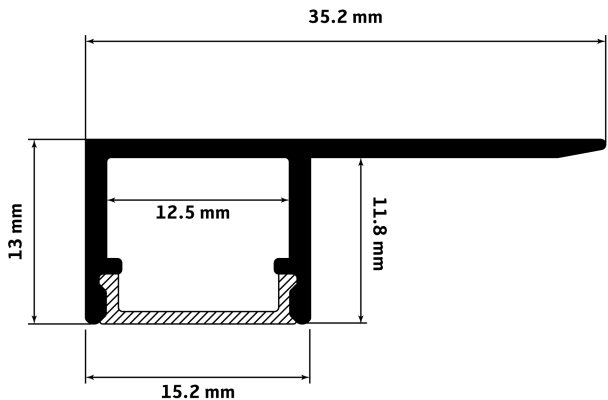
Profile Width	15.2mm (35.2mm Including Flange)
Profile Depth	13mm
Max LED Width	12.6mm
Available Lengths	1m / 2m (Bespoke Lengths Available)
IP Rating	20
Lens Cover	Opal / Semi Diffused (20%)
Certified	CE + RoHS
Colour	Silver / White / Black
Material	Base - Aluminium / Cover - Polycarbonate
Included	1x Base / 1x Cover / 2-4 End Caps / Foam Insert

DESCRIPTION

The tile in / step aluminium profile is designed for installations that require sleek, integrated professional finishes.

It features a semi-diffused opal lens, which effectively disperses the light from individual LED diodes, creating a smooth and continuous light-bar effect.

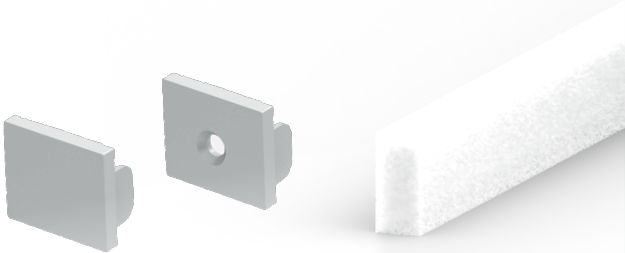
DIMENSIONS



ACCESSORIES

End Caps:

Foam Insert:



INSTALLATION OPTIONS

Fixing Brackets:

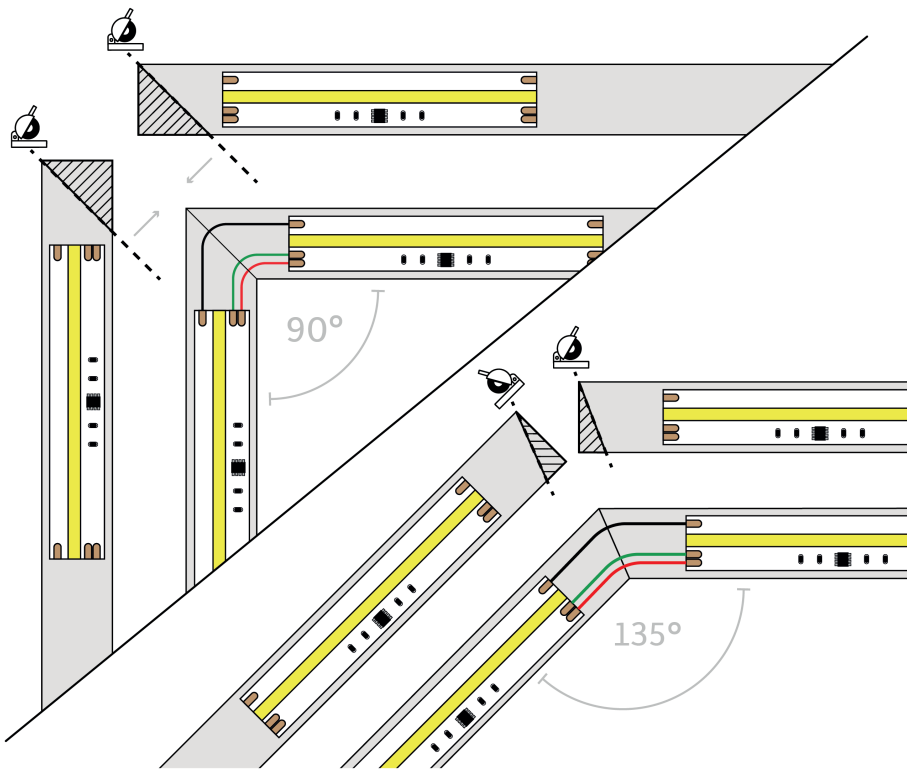
For added convenience, use our specially designed fixing brackets. These can be screwed or nailed into place, allowing the aluminium profile to clip securely onto them.

Adhesive:

Due to its lightweight, you can Dot & Dab the profile directly to the surface with a grab adhesive (CT1 for example)

Countersink Screws:

Secure the profile directly to the surface with countersink screws.



CUSTOMISABLE LENGTHS

Our tile in / step profile is available in standard lengths of 1m and 2m but they can be easily customised to your specific requirements. Simply cut the profile with straight or mitred cuts by using a hacksaw for a perfect fit.

For further details and support on LED profiles and extrusions, visit our dedicated aluminium profiles and extrusions support page.