

DATA SHEET

Thin Surface 8mm LED Profile

Product Code: P-TS8

P-TS8



Fixing Clips



End Caps



Semi Diffused Cover

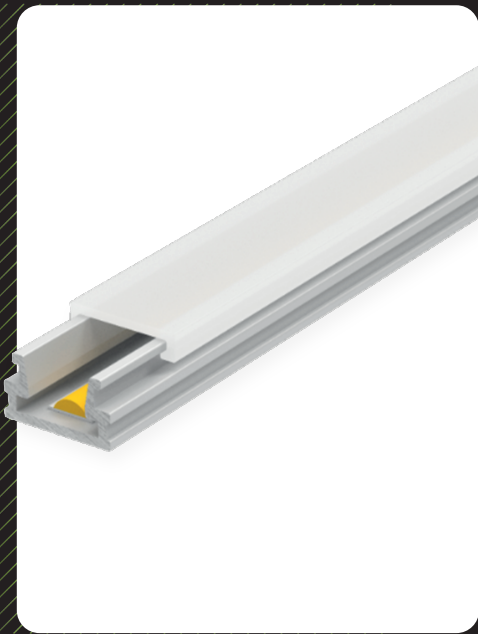
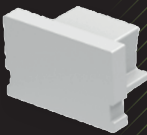


RoHS
Compliant



CE

5 YEAR
WARRANTY



PRODUCT SPECIFICATION

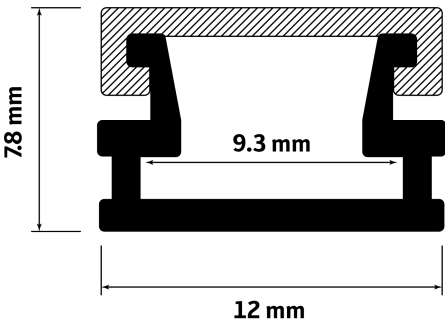
Profile Width	12mm
Profile Depth	7.8mm
Max LED Width	9.3mm
Available Lengths	1m / 2m (Bespoke Lengths Available)
IP Rating	20
Lens Cover	Opal / Semi Diffused (20%)
Certified	CE + RoHS
Colour	Silver
Material	Base - Aluminium / Cover - Polycarbonate
Included	1x Base / 1x Cover / 2-4 End Caps / 2-4 Fixing Clips

DESCRIPTION

The thin surface 8mm aluminium profile is designed to deliver a sleek and professional finish for your LED installations.

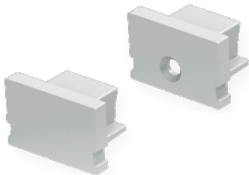
It features a semi-diffused opal lens, which effectively disperses the light from individual LED diodes, creating a smooth and continuous light-bar effect.

DIMENSIONS



ACCESSORIES

End Caps:



Fixing Clips:



INSTALLATION OPTIONS

Fixing Brackets:

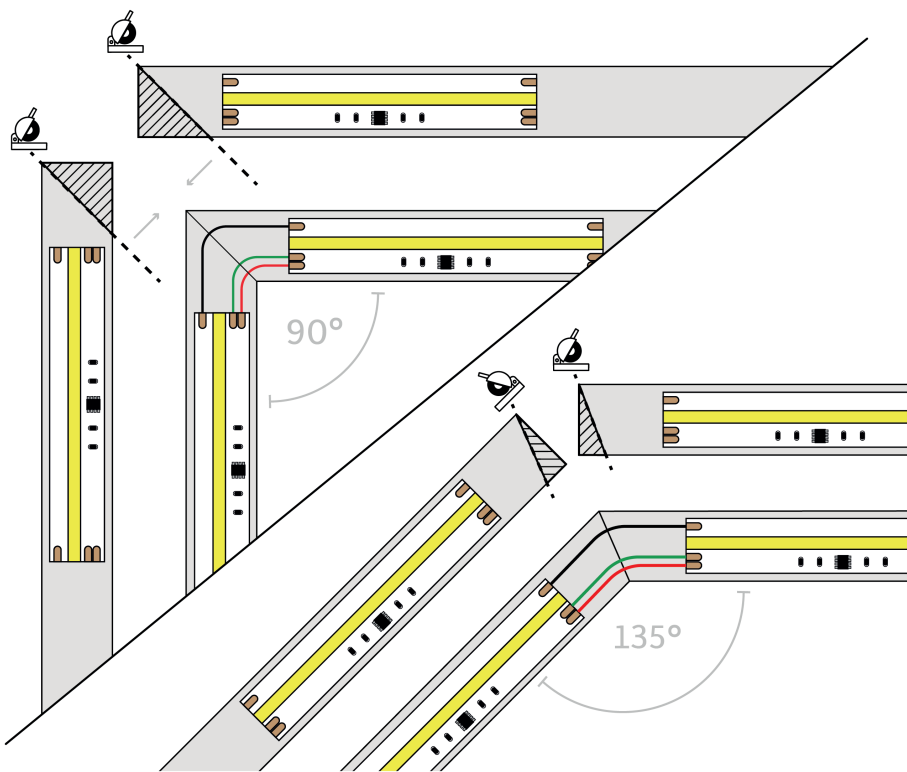
For added convenience, use our specially designed fixing brackets. These can be screwed or nailed into place, allowing the aluminium profile to clip securely onto them.

Adhesive:

Adhesive: Due to its light weight, you can Dot & Dab the profile directly to the surface with a grab adhesive (CT1 for example)

Countersink Screws:

Secure the profile directly to the surface with countersink screws.



CUSTOMISABLE LENGTHS

Our thin surface 8mm profile is available in standard lengths of 1m and 2m but they can be easily customised to your specific requirements. Simply cut the profile with straight or mitred cuts by using a hacksaw for a perfect fit.

For further details and support on LED profiles and extrusions, visit our dedicated aluminium profiles and extrusions support page.