


DATA SHEET

Water Resistant LED Profile


Product Code: P-WR-1 / P-WR-2

P-WR


Free Foam Inserts




Fixing Clips




End Caps



Semi Diffused Cover



RoHS Compliant



CE

5 YEAR WARRANTY



PRODUCT SPECIFICATION

Profile Width	16mm
Profile Depth	8.8mm
Max LED Width	13mm
Available Lengths	1m / 2m (Bespoke Lengths Available)
IP Rating	65
Lens Cover	Opal / Semi Diffused (20%)
Certified	CE + RoHS
Colour	Silver
Material	Base - Aluminium / Cover - Polycarbonate
Included	1x Base / 1x Cover / 2-4 End Caps / 2-4 Fixing Clips

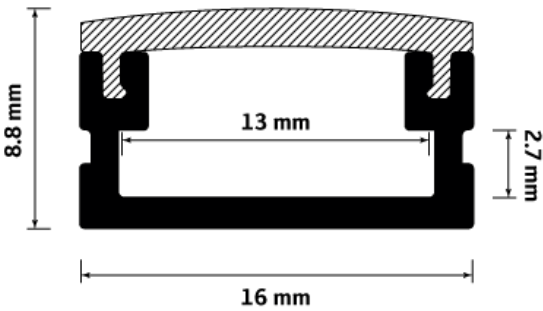
DESCRIPTION

The water resistant aluminium profile can be used for both surface mounted or recessed installations. Boasting a robust opal lens, this profile is built to handle the daily wear and tear of high traffic areas.

Whilst its IP rating will repel light rain or moisture, it cannot be submerged in water. So if there is risk of pooling, please ensure measures are taken to avoid this.

Also featuring a semi-diffused opal lens, which effectively disperses the light from individual LED diodes, creating a smooth and continuous light-bar effect.

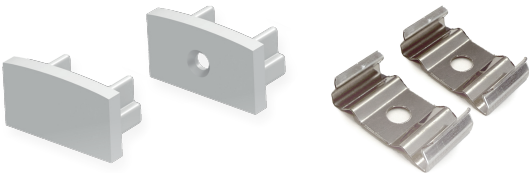
DIMENSIONS



ACCESSORIES

End Caps:

Fixing Clips:



INSTALLATION OPTIONS

Fixing Brackets:

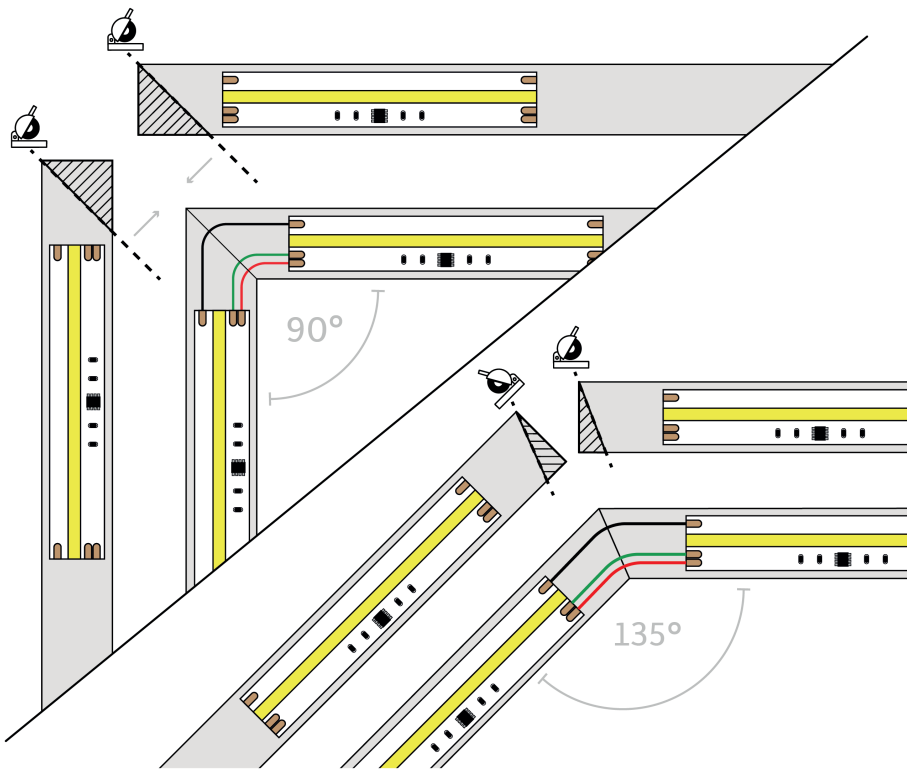
For added convenience, use our specially designed fixing brackets. These can be screwed or nailed into place, allowing the aluminium profile to clip securely onto them.

Adhesive:

Due to its lightweight, you can Dot & Dab the profile directly to the surface with a grab adhesive (CT1 for example)

Countersink Screws:

Secure the profile directly to the surface with countersink screws.



CUSTOMISABLE LENGTHS

Our water resistant profile is available in standard lengths of 1m and 2m but they can be easily customised to your specific requirements. Simply cut the profile with straight or mitred cuts by using a hacksaw for a perfect fit.

For further details and support on LED profiles and extrusions, visit our dedicated aluminium profiles and extrusions support page.